

**Table 27: Persistence and Graduation of On-Campus, New Full-time Freshmen Seeking a Baccalaureate Degree Students Entered New to Campus in One of the Fall Semesters 2004-2010 (10th-day headcount)**

Entering Fall Semester	Cohort Headcount	Continued to 2nd Yr	Continued to 3rd Yr	Graduated within 4 Yrs	Continued to 5th Yr	Graduated within 5 Yrs	Continued to 6th Yr	Graduated within 6 Yrs	Continued to 7th Yr
2004	2,480	70.2%	57.2%	26.0%	24.8%	40.8%	6.7%	46.1%	2.9%
2005	2,315	67.4%	54.5%	20.5%	24.8%	40.8%	6.2%	44.5%	2.4%
2006	2,222	69.8%	58.5%	26.1%	25.3%	42.8%	7.1%		
2007	2,488	69.1%	56.1%	23.3%	25.4%				
2008	2,558	67.8%	55.7%						
2009	2,325	68.7%	57.2%						
2010	2,201	66.2%							

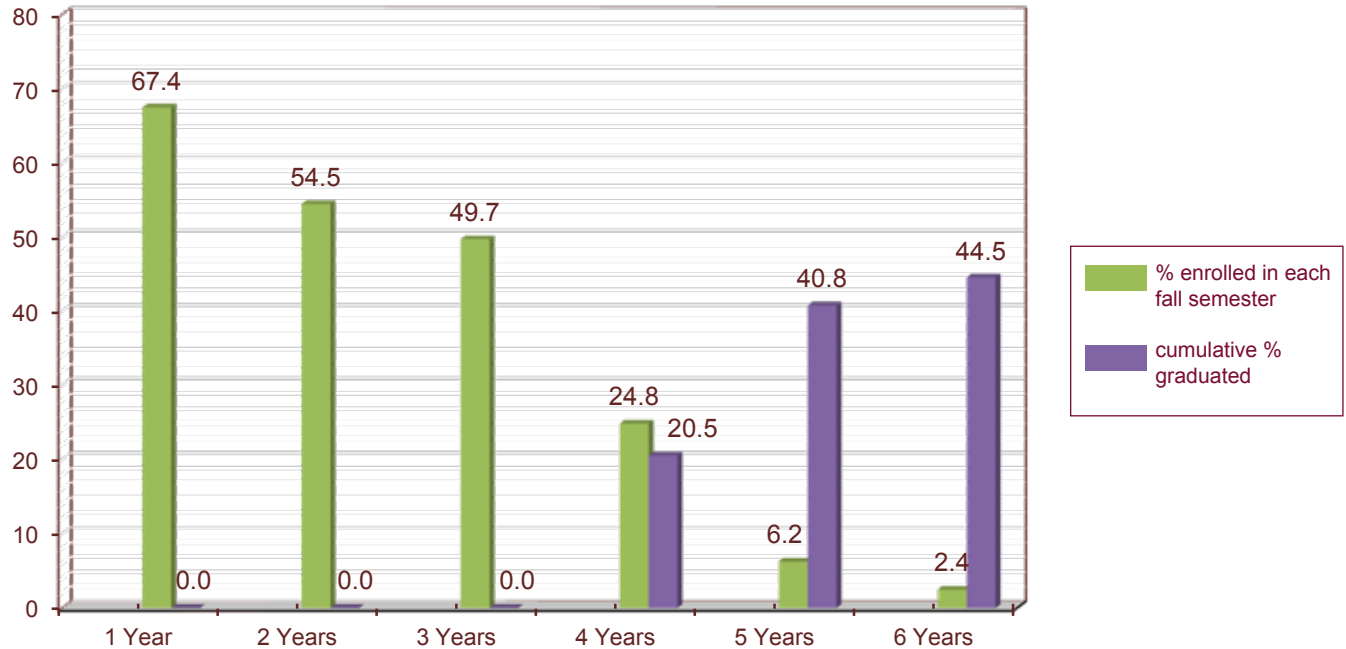
NOTES: Percents are cumulative rather than annual percents.

Each graduation year contains all recorded graduations of students in a graduation year of December, May, and August. Each cohort consists of all new full-time freshmen entering SIU Carbondale in the respective summer and continuing into fall, or entering in that fall semester for the first time. On-campus only degree-seeking students are included in each cohort. All 10th-day cohorts were tracked through the end of Fall Semester 2011, and the status of the student is recorded each fall semester following the fall semester the student entered as a new freshman: did the student graduate, is the student still persisting, or is the student a non-persister.

Continued to 2nd Year, 3rd Year, etc. is defined as a student who returns for the Fall semester of that year.

The cohort headcount for new, full-time freshmen will not match Fact Book Table 2 because Table 2 includes associate degree-seeking and off-campus students as well as baccalaureate degree-seeking students.

SOURCE: Institutional Research and Studies Longitudinal Student History File and 10th-day student census files.

**Figure 22: Retention and Graduation Pattern of New Freshmen 2005 Cohort**

# Southern Illinois University Carbondale

## FACT BOOK 2011 - 2012

❧ Edition Twenty-six ❧

January 2012

### Institutional Research and Studies

Staff Contributors:

Linda Benz

Kara Bedar \*

Christine Blackburn

Tim Bogard

Kathy Capel

Bonnie Ebelhar

Rhonda Hooper

Emily Moore \*

Ushma Patel \*

Lawrence Schilling

Tyler Stacy\*

Andy Walker

*Cover design by Amy Dion (University Communications)*

*Images provided by University Communications*

*Maps provided by Nathan Rahe (Library Affairs-GIS)*

*\* Part-time student staff*